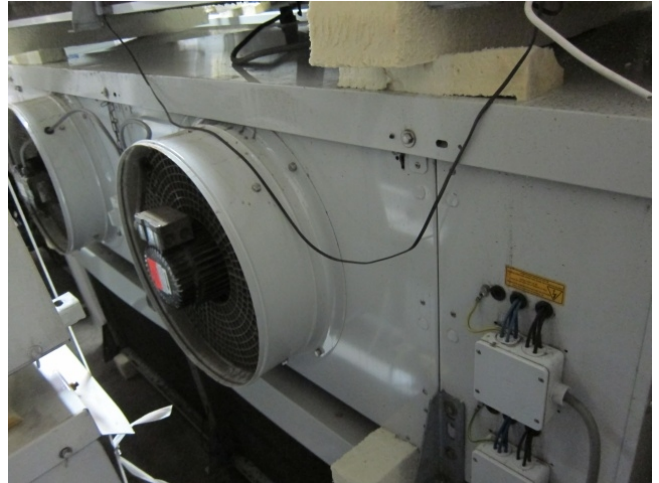


Kuba SGBE 50-F62

Specifications

| | |
|---------------------|--|
| Merk | Kuba |
| Type | SGBE 50-F62 |
| Capaciteit kW | 21,3 |
| Koudemiddel | Freon |
| Aantal Ventilatoren | 2 |
| Lamel afstand in mm | 7 |
| Ontdooiing | Electric |
| m ³ /h | 11800 |
| Afmetingen | 2580x850x660 mm (LxWxH) |
| Opmerkingen | y.o.b. 2005 // Fan: 0,8 kW / 1400 RPM / Ø = 500 mm |
| Stock | 3 |



Description

Used Kuba SGBE 50-F62

y.o.b. 2005 // Fan: 0,8 kW / 1400 RPM / Ø = 500 mm / 11800 m³/h

